

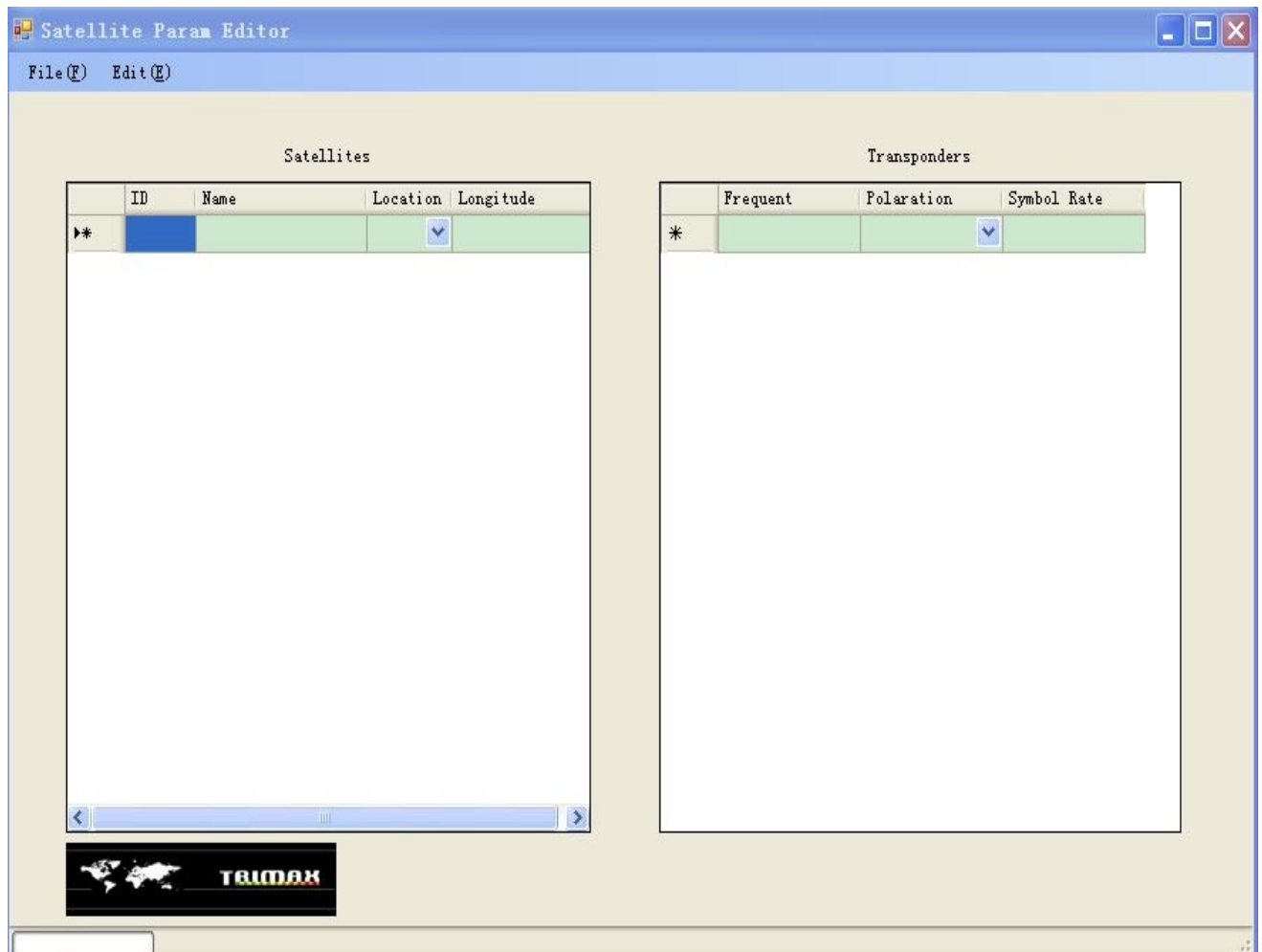
Satellite Parameter Editor User guide

Function :

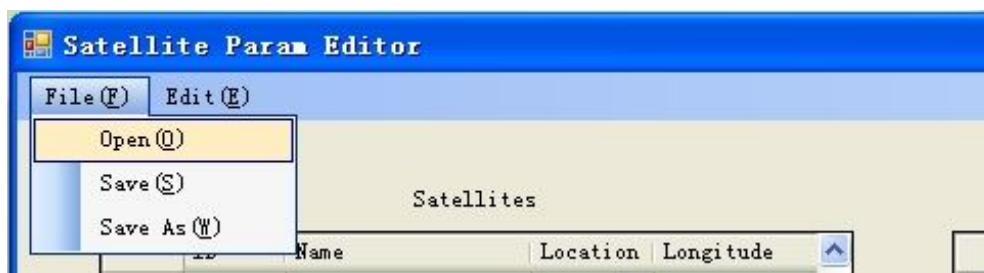
- 1、 To add, delete or edit the satellite parameters;
- 2、 To add, delete and edit the TP parameters ;
- 3、 Save the modified .bin file to upgrade the meter;
- 4、 Before the modification, pls save the old file to avoid the loses;

How to operate:

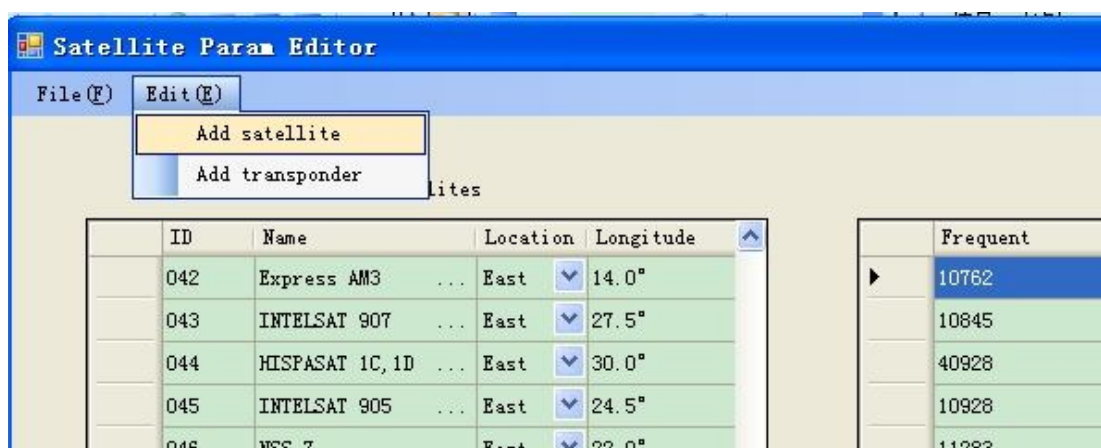
- 1、 open 'Satellite Parm Editor' ;



- 2、 choose 'File(F)->Open(O)' as the following picture , to open the existed satellite parameter file (.bin file, which can be exported from the Meter , see how to export the satellite parameters from Meter):



- 3、 in the opened file which you can see the satellite list, and modify the parameters:
 Edit: just input the numeric value directly
 Delete: choose the line you want to delete, and press the "Delete" key on your keyboard
- 4、 How to Add satellite:
 Way 1: choose Edit(E)->Add satellite



way2: Double click the last line(with stars) of Satellite chart ,



Note: Longitude numeric value should move the dot to right (one digit), for example: if it's 10 degree, you should input 100; if it's 12.3 degree, it should be 123

5、 How to add TP:

Way 1: choose Edit(E)->Add Transponder;

Way2 : double click the last line of Transponder chart(with the

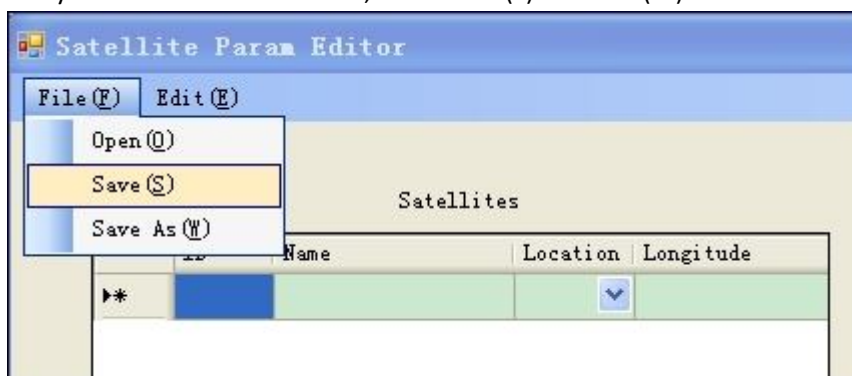
Transponders			
	Frequent	Polaration	Symbol Rate
	11140	H	2894
	11144	H	2442
	11221	V	27500
	11148	H	2893
	11863	H	3830
	12611	H	3253
▶*			

star) , then will be done.

Input frequency under **Frequent**, input the polarity under **Polaration**, input the numbers under **Symbol Rate**.

6、 If you want to cover the old file , choose File(F)->Save(S);

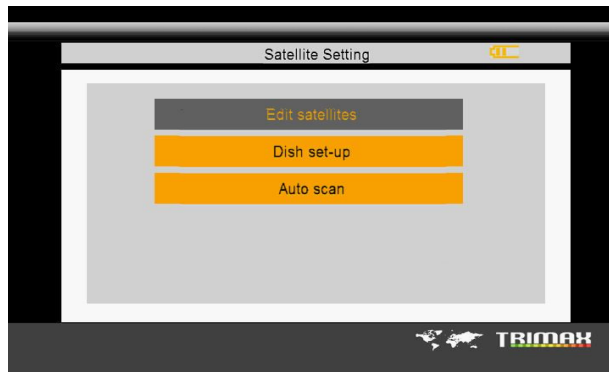
Or you can save one more file , choose File(F)->Save As(W)。



7、 Upgrade the modified parameters: copy the the .bin file to flash USB sticker, insert it to the meter, then choose USB Service,then parameter updata, choose the modified bin file to upgrade.

How to get the satellite parameters from Meter

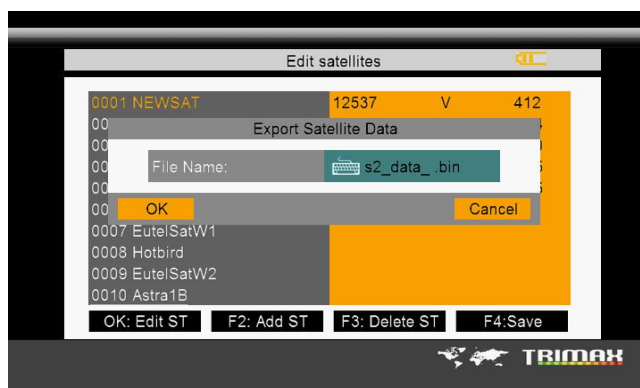
1. Turn on the meter , then plug in the USB flash sticker
2. Go to MAIN MENU , choose SATELLITE SETTING , then choose EDIT SATELLITE



3. you will see following OSD



4. Press number "0"



5. Move the cursor to "OK", and choose, the Satellite list will be stored to your USB flash sticker, and saved file is .bin format, you can use this file to edit the satellite list .

