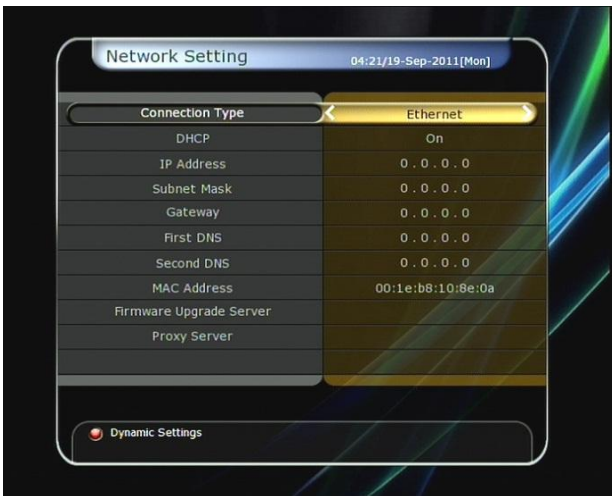


How to set 3G Modem

Please turn off and on after connecting 3G modem device to USB port at rear side of receiver.

1. Go to Network Setting

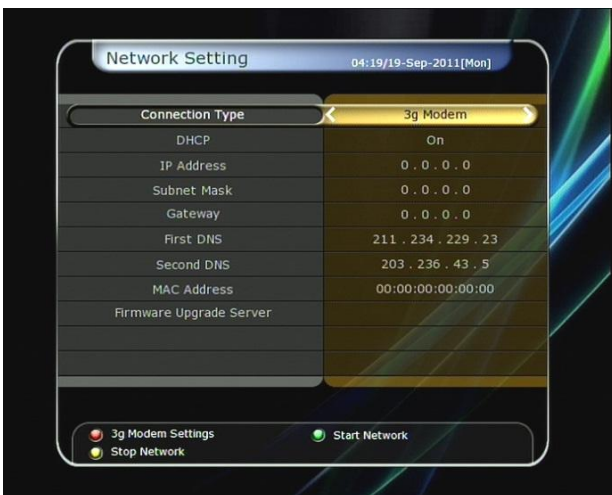


** If your 3G modem's device is not on the list, set ttyUSB 0 ~ 4 port manually one by one please.

- Most brands of 3G modems are using ttyUSB0.

- ZTE and D-LINK are using ttyUSB2.

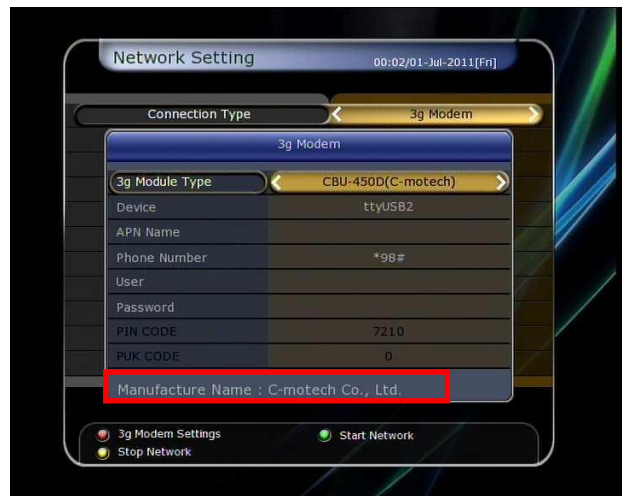
2. Choose Connection Type as 3G Modem



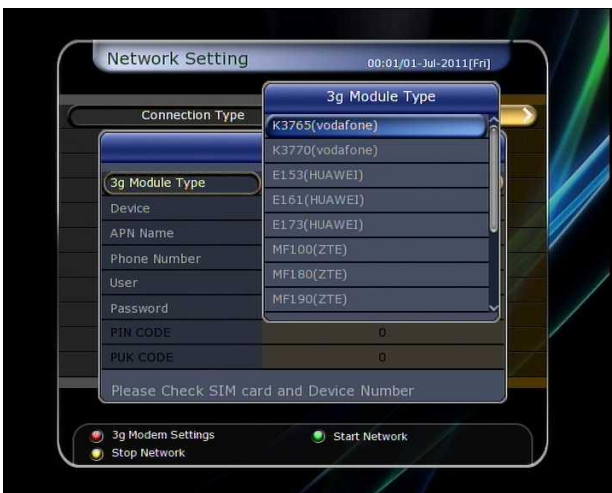
Put other information

- 1) APN Name : Access Point Name
- 2) Phone number
- 3) User ID and Password: put your Sim card's info.
- 4) PIN Code : 4 numbers PIN code
- 5) PUK Code : 8 numbers PUK code

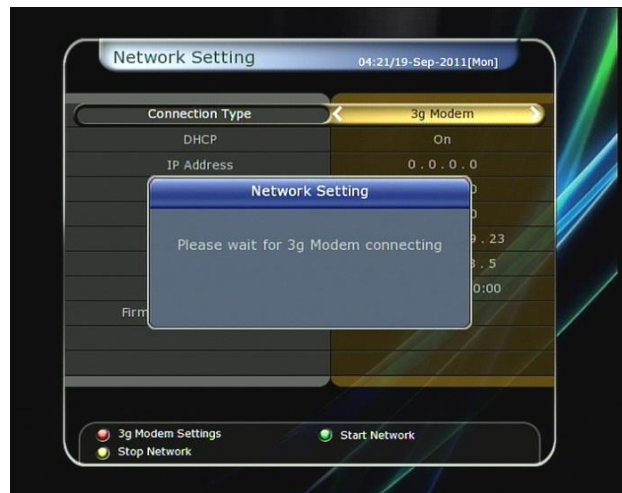
4. You can find your 3G modem device name on the bottom line, once setting is correct.



3. Press Red button for modem setting

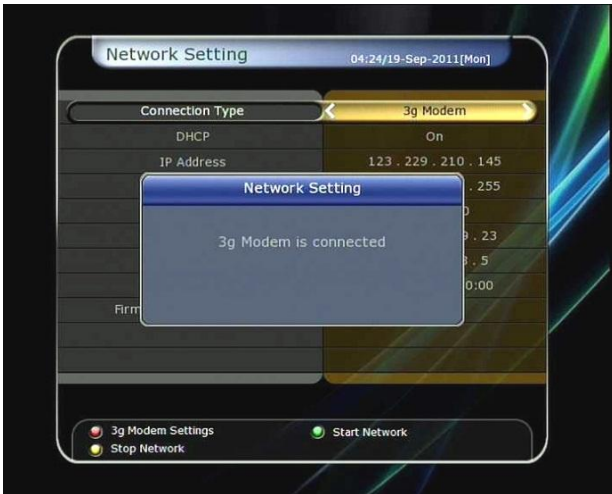


5. Press Green button to start network.



** Select your 3G modem device name on the list. Then, ttyUSB port will set automatically.

6. 3G Modem is connected successfully.



** Remark

- 1) APN, user name/password should be correct put in. Otherwise 3G modem is unable to connect. (If disconnection message keeps showing, please check the APN, user name/password)
- 2) Use another USB memory stick on the same time is not recommended.